



GAT MONTHLY MEMBERSHIP PROGRESS REPORT

Results as of: 3/31/2021

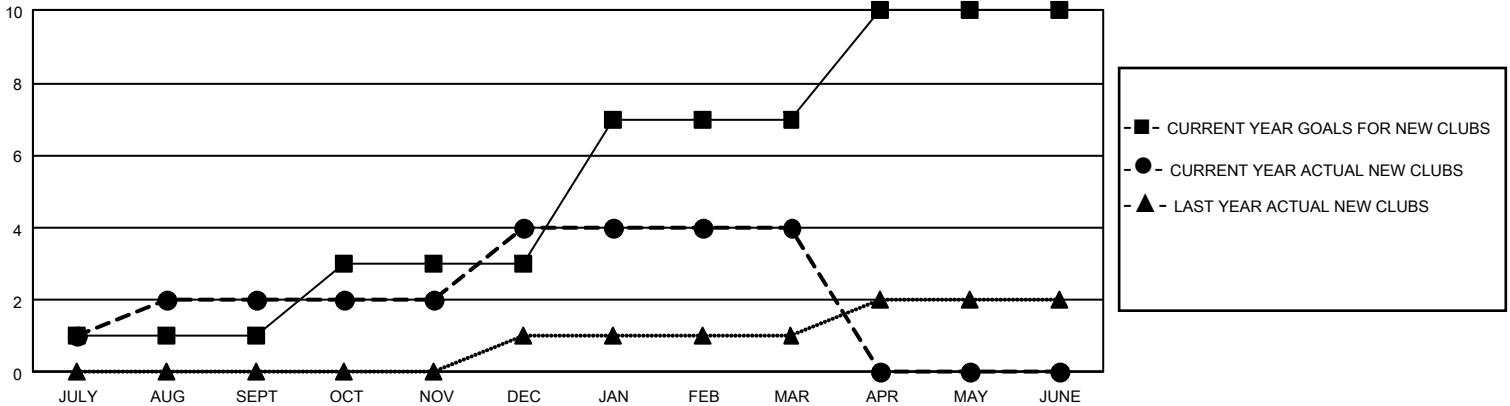
GMT Constitutional Area 3, Group J

REPORT DOES NOT INCLUDE CLUBS IN UNDISTRICTED AREAS.

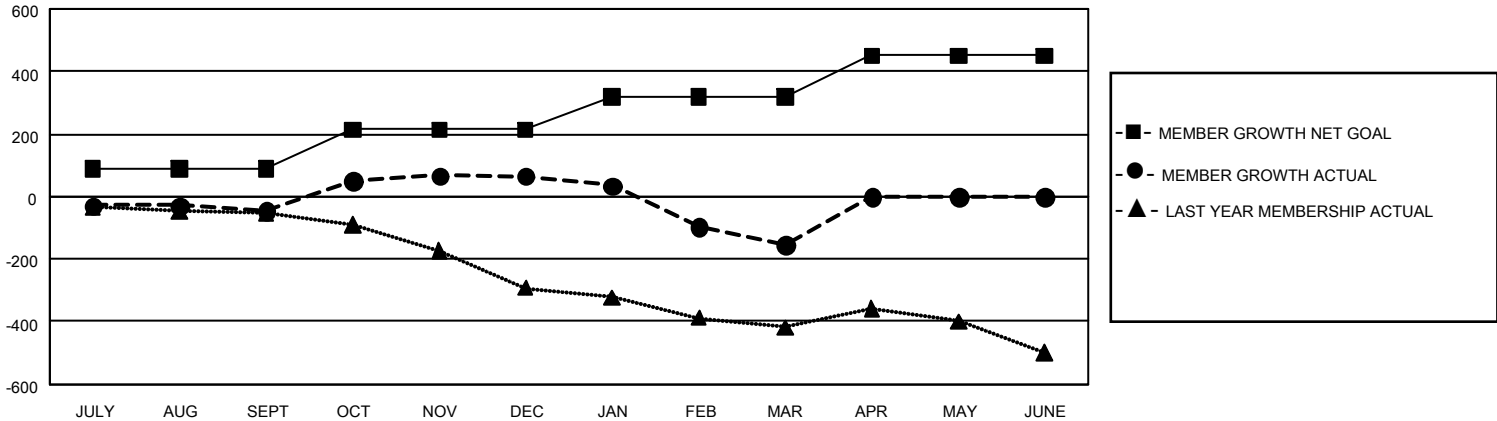
| Clubs | | | |
|-----------------------|---------------|-----------|---------------|
| RESULTS FOR 2020-2021 | | | |
| QUARTER | NEW CLUB GOAL | NEW CLUBS | DROPPED CLUBS |
| JULY/AUG/SEPT | 3 | 2 | 1 |
| OCT/NOV/DEC | 6 | 2 | 0 |
| JAN/FEB/MAR | 12 | 0 | 11 |
| APR/MAY/JUNE | 9 | 0 | 0 |

| Members | | | |
|-----------------------|------------------------|----------------------|----------------------------------------------|
| RESULTS FOR 2020-2021 | | | |
| QUARTER | MEMBER GROWTH NET GOAL | MEMBER GROWTH ACTUAL | DROPPED MEMBERS ACTUAL (including transfers) |
| JULY/AUG/SEPT | 90 | 139 | 177 |
| OCT/NOV/DEC | 125 | 339 | 210 |
| JAN/FEB/MAR | 105 | 50 | 263 |
| APR/MAY/JUNE | 130 | 0 | 0 |

GOALS AND ACTUAL NEW CLUBS CUMULATIVE



GOALS AND ACTUAL MEMBERS CUMULATIVE



DROPPED CLUBS: 12

89 CLUBS OF 203 ADDED 1 OR MORE NEW MEMBERS

GENDER DISTRIBUTION

MALE 2,861 (56.22%)
FEMALE 2,228 (43.78%)

DROPPED MEMBERS

| | |
|----------------|------------|
| DECEASED | 65 |
| CLUB CANCELLED | 139 |
| OTHER | 446 |
| TOTAL | 650 |

[CLICK HERE FOR CUMULATIVE MEMBERSHIP DATA](#)

TOTAL FAMILY UNIT MEMBERS 2,227

FAMILY MEMBERS PAYING HALF DUES 1,168